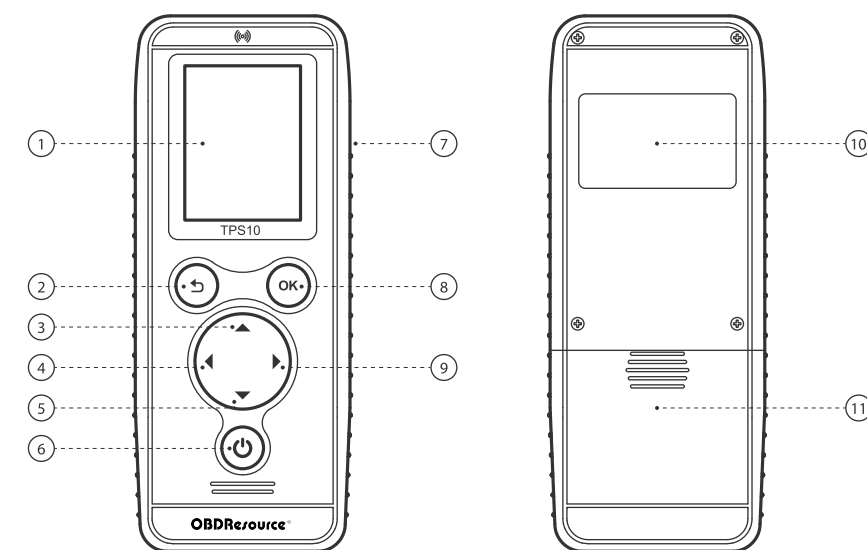


PRODUCT DESCRIPTION

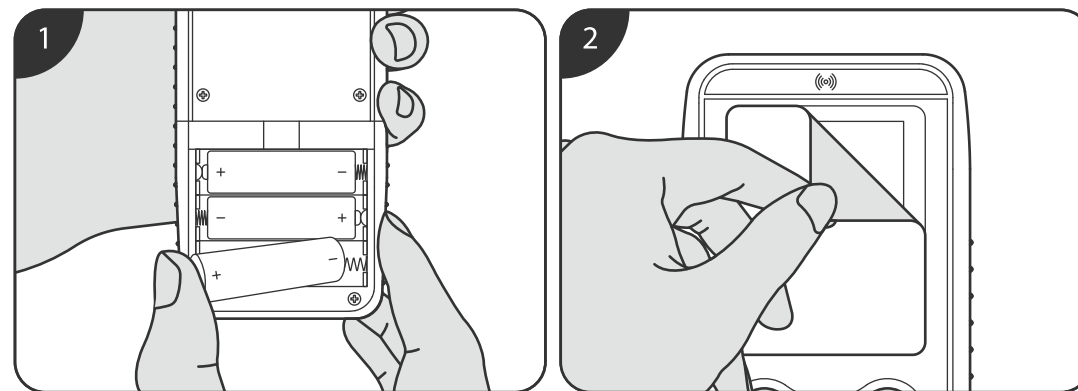
01



- | | | | |
|--------------------------------|-------------|-----------------|-----------------------|
| ① 2.4 inch TFT HD color screen | ④ Left key | ⑦ USB interface | ⑩ Body stickers |
| ② Back key | ⑤ Down key | ⑧ OK key | ⑪ Battery compartment |
| ③ Up key | ⑥ Power key | ⑨ Right key | |

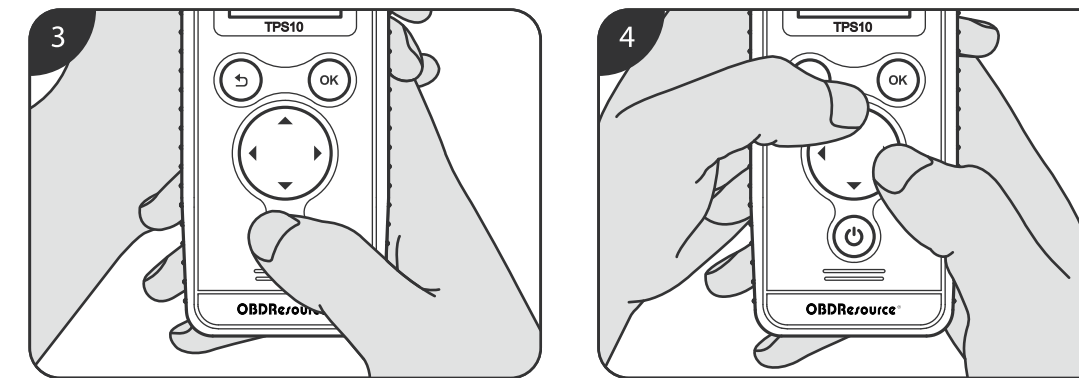
OPERATION GUIDE

02



1. Put in (AA batteries) ×3 for power.

2. Tear off the screen tear film.



3. Press and hold the power key to turn ON / OFF the device.

4. Press Up / Down / Left / Right to select the function to test.

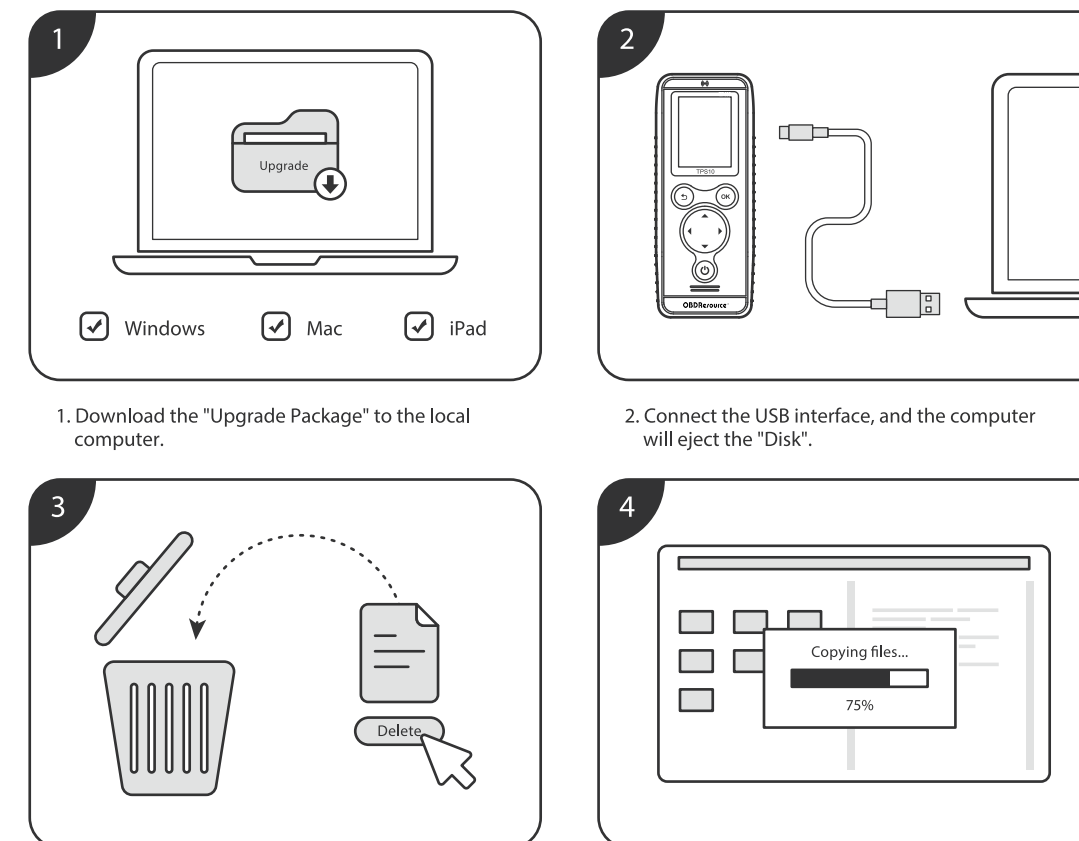


When this device is inactive:

By default, it will automatically shut down after five minutes (the user can set the duration in "Settings") to save power consumption.

SOFTWARE UPGRADE

03



1. Download the "Upgrade Package" to the local computer.

2. Connect the USB interface, and the computer will eject the "Disk".

3. Format all files in "Disk".

4. Copy the files in the "Upgrade Package" to the "Disk".